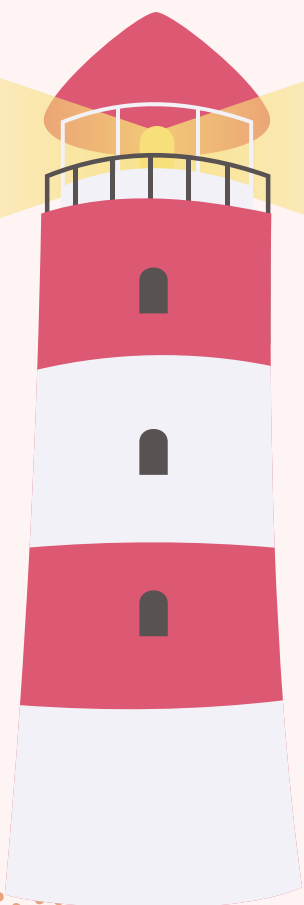
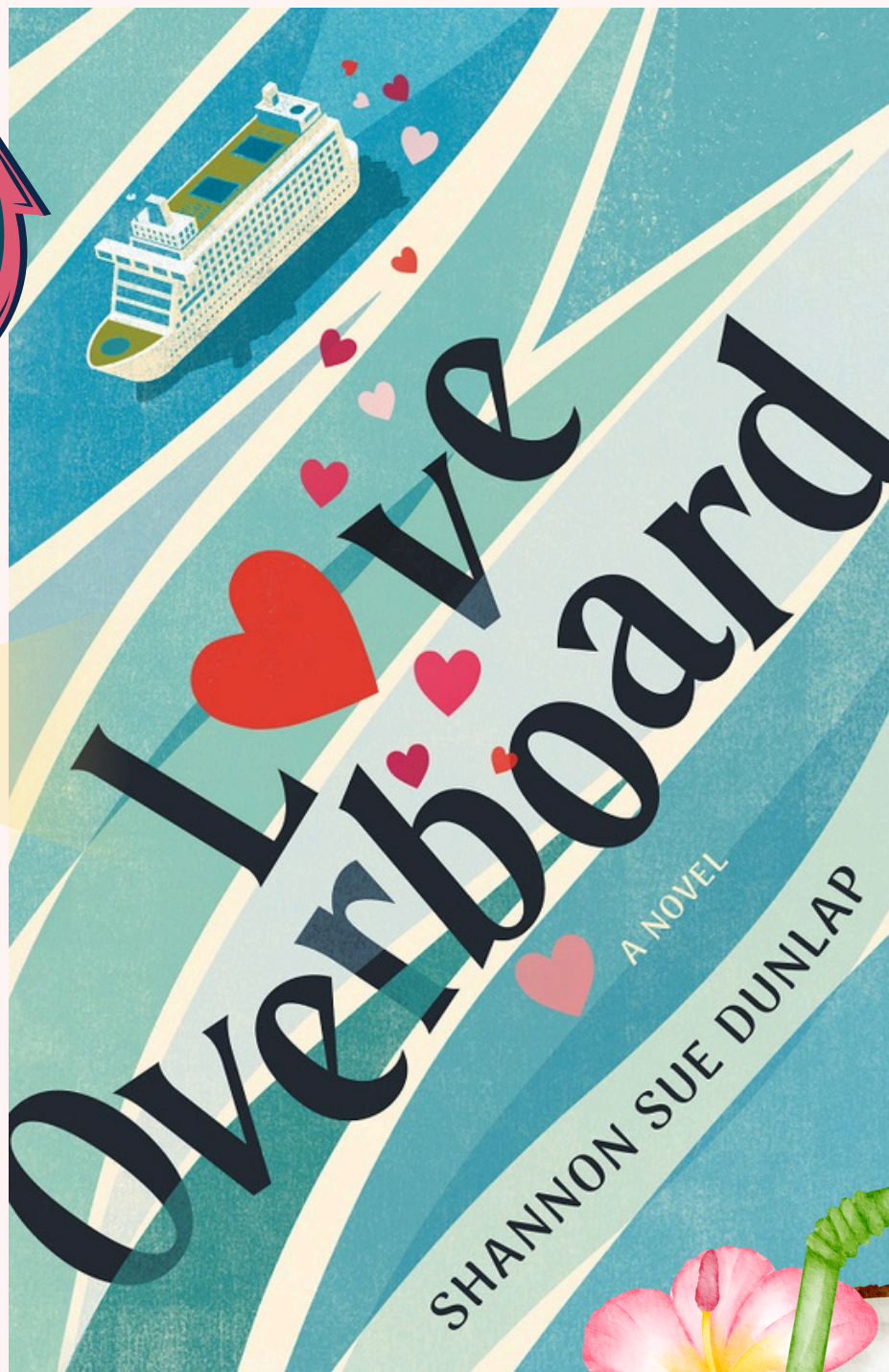
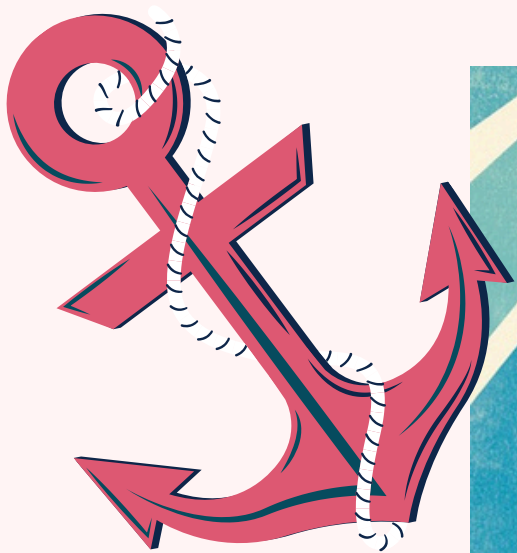


BOOK CLUB KIT





Meet the Author

Hello Readers!

My name is Shannon Sue Dunlap and I write books with a dose of laughter and a spoonful of love, God's love, that is. A merry heart does good like a medicine, and I hope every person who reads my stories will feel a shot of joy coursing through their arteries when they finish. One of the greatest compliments you can give me is saying my book made you laugh-out-loud. I love traveling around the world, singing tunes from classic musicals, and drinking Dr. Pepper. I'm a die-hard fan of happy endings and believe God has created one for each of us.

My ideas come from everywhere. You know the disclaimer at the beginning of books and movies about any resemblance to real persons being a coincidence? Ignore it. Writers are always soaking in the people around them. Not to sound creepy, but I once followed a stranger through the airport because I thought she talked like one of the characters in my Love Overboard series (Althea, if you care to know), and I wanted to hear what she would say next. One of my goals is for readers to recognize themselves in my characters. We're all such a fabulous mix of flaws and greatness, and everyone is the hero or heroine in their own life story.

Thank you for setting sail with the Shippers. Bon voyage and may your life be jam-packed with joy!

Shannon Sue Dunlap



Author Website



Instagram



Facebook



Goodreads

The author is happy to donate her time to meet with your book club on a zoom call. Please contact her at shannonsuedunlap@gmail.com.

Meet the Shippers

**TOP
SECRET**

LOVE OVERBOARD SECURITY FILES: THE MATCHMAKER DOSSIERS

To: The MS Buckingham Security Team

From: Adrian Everson, Chief Security Officer

It has come to my attention that four female senior citizens have taken up permanent residence on the MS Buckingham. While living on a cruise ship is not unheard of, this particular group warrants investigation. They wander into off-limit areas of the ship, and their constant meddling in the personal lives of staff members has caused some conflict. These self-proclaimed "Shippers" fancy themselves matchmakers. Please study the dossiers on each individual and be prepared to take action if they step over the line.



EMILY WINDSOR

CAREER MILITARY WIFE/WIDOW

Age: 78

Physical Description: 5'5"; approx. 135 lbs.; short, frizzy, white hair; tends to wear garish paisley and floral prints

Personality: Spitfire

COUNTERMEASURE

Mrs. Windsor appears to be the group's leader. She is warm and welcoming at first glance but possesses a stubborn streak. When meeting resistance, she is likely to barrel over any opposition, especially in regard to matchmaking. Approach with caution.



DAISY RANDOLPH-MASTERSON

SOCIALITE

Age: 72

Physical Description: 5'3"; approx. 105 lbs.; chin-length silver hair; appears younger than her age (has probably had work done)

Personality: Gracious, Well-mannered, Unlikely to cause trouble

COUNTERMEASURE

Mrs. Randolph-Masterson comes from a wealthy, influential family in New Orleans, Louisiana and values a harmonious environment. When not with her cohorts, she's most likely to be found at the ship's spa or art gallery. Her nosy friends seem to be the instigators, and it may be possible to talk sense into her.



ALTHEA JONES

EXPERT BINGO PLAYER

Age: 72

Physical Description: 5'6"; approx. 260 lbs.; close-cropped silver hair; likely to be smiling; wears a rhinestone fanny pack

Personality: Friendly, VERY friendly (entirely too fond of hugs)

COUNTERMEASURE

Mrs. Jones also originates from New Orleans and is a close friend of Mrs. Randolph-Masterson. The only thing this widow likes better than arranging matches is looking for a new husband for herself. (He would be spouse number four.) Mrs. Jones's favorite areas of the ship are the buffet and the BINGO room. Stay out of hugging distance when trying to engage.



GERALDINE "GERRY" PAROO

RETIRED LIBRARIAN

Age: 70

Physical Description: 5'10"; approx. 140 lbs.; salt-and-pepper gray hair, always worn in a bun

Personality: Difficult to pinpoint, her face is often hidden behind the book she's reading

COUNTERMEASURE

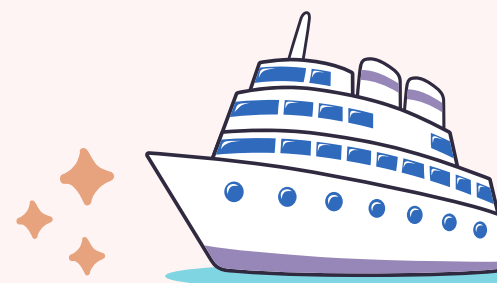
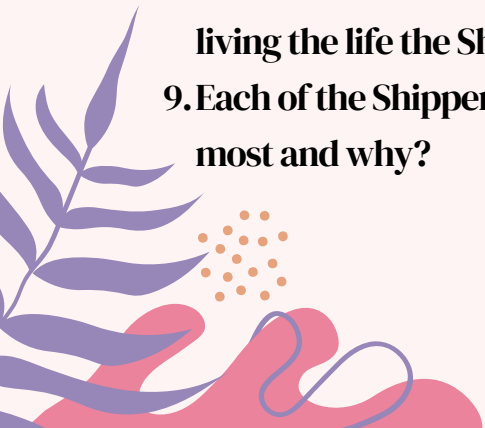
Ms. Paroo worked over fifty years as a librarian. Although she's introverted and doesn't say much, it should not be mistaken as timidity. There's a confident, intelligent air about her which might prove difficult to manage if she chooses to disregard conventions. (The new Irish magician for the evening shows appears to be smitten with her. Perhaps this will distract Ms. Paroo from causing any more upheaval with matchmaking attempts.)



DISCUSSION QUESTIONS



1. The Shippers consider matchmaking their mission in life. Do you have an unusual calling or hobby that gives you purpose?
2. Lacey Anderson is conscientious and hard-working, but underneath her diligence is a need for control. What circumstances do you think made her this way? Do her rules and lists and schedules help or hinder her happiness?
3. Emily Windsor is willing to take extreme measures to arrange a match, including locking people up or stranding them in a remote location. Why does she work so hard to help others win the love of their lives?
4. A chance for one of the Shippers to find romance presents itself in the form of the charming Irish magician, Seamus. Why do you think Gerry rejects his interest?
5. The unexpected storm that strands Jon and Lacey leads to their reconciliation. Have you ever been through a natural disaster that led to a meaningful or life-changing moment?
6. Jon hid his true identity from Lacey for years. Although he wasn't completely truthful with Lacey, it makes sense from a business standpoint. Do you feel she was justified in her feelings of betrayal, or did she overreact?
7. It's obvious from Jon's connections with the cruise line that he had the ability to find Lacey when she disappeared years earlier, yet he didn't do it. What do you think held him back? How do you think Lacey would have reacted if he'd followed her then?
8. Although living on a cruise ship may sound luxurious, there is a lot of repetition involved with the same schedules, shows, dinners, etc. Do you think you would like living the life the Shippers have chosen?
9. Each of the Shippers has their own distinct personality. Who do you relate to the most and why?



PARTY IDEAS

Adding a few costumes, decorations, and games can turn your book club meeting into a cruise-worthy celebration.

Party Themes

Cruise/Vacation - Celebrate indoors or outside by a pool.

- **Costumes**
 - Dress like it's sailing day. Hawaiian shirts, leis, grass skirts, floppy sunhats, captain's uniform, etc.
- **Decor**
 - Travel posters on the wall
 - A beach background
 - Picnic umbrellas
 - Pool Chairs
 - Coconuts and cups with the tiny umbrellas
- **Games/Activities**
 - Cruise Ship Bingo (provided in this kit)
 - Limbo



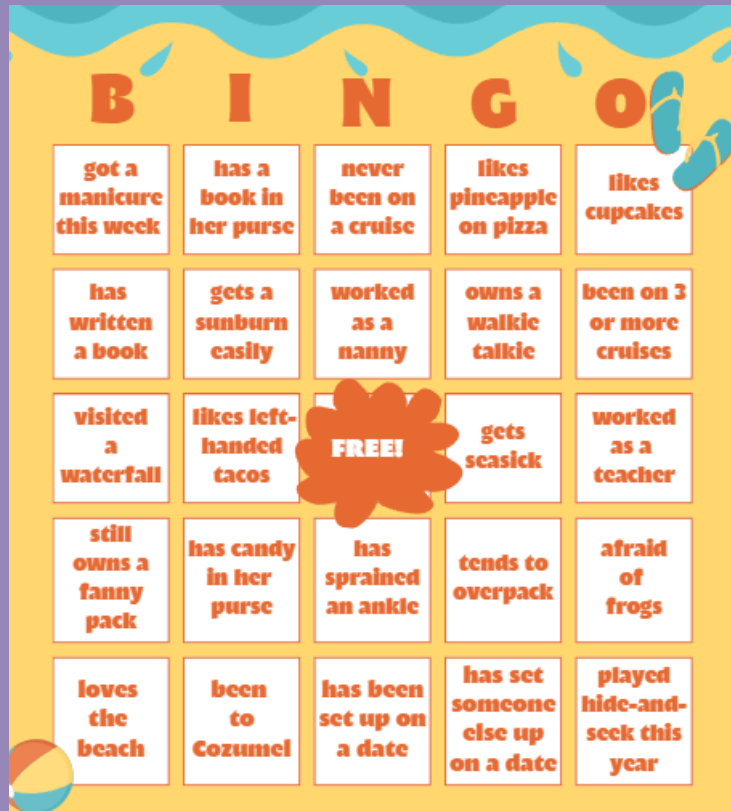
Masquerade Ball - Grab your best little black dress and fancy it up a little.

- **Costumes**
 - Sequins, feather boas, your favorite formal gown and, of course, masks
- **Decor**
 - Candlelight, confetti, and swanky music
- **Games/Activities**
 - Karaoke
 - Ballroom Dancing - release your inner Althea and tango the night away
 - Charades - act out your favorite scenes and characters
 - Love Overboard Bingo



BiNGO

Love Overboard Bingo



There are two versions available:

In the first version, players will find people who fit the different scenarios and have them sign the blocks. (Depending on how many people play, you can limit the number of times the same person can sign on multiple blocks.)

The second version is played like traditional bingo. Use an online random number generator to call the numbers from 1-50.



SIMPLE SHIPPER RECIPES



Turn your book club meeting into a cruise-worthy party with these super-simple recipes.



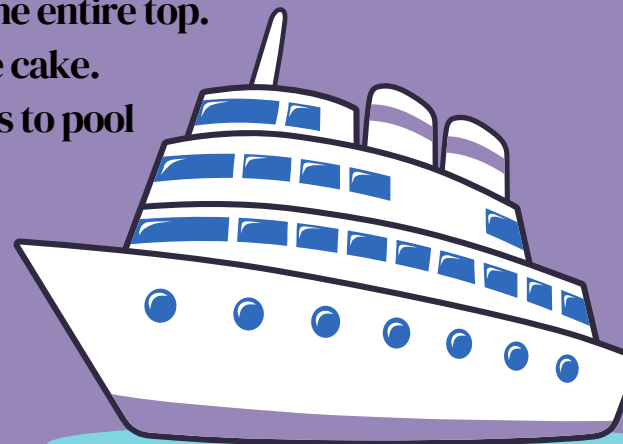
Althea's Coco Loco Cake

Ingredients

- 1 box of white or yellow cake mix (and whatever ingredients it calls for)
- 1 can of crushed pineapple
- 1 container of Cool Whip
- 1 can of coconut milk
- 1 package of frozen shredded coconut

Directions

1. Prepare the white cake mix according to the instructions on the box in a 9 x 13 cake pan.
2. Allow the cake to cool for 20-30 minutes. Also, let the frozen coconut thaw.
3. Once the cake is cool, take a fork and poke holes over the entire top.
4. Pour coconut milk over the holes and let it soak into the cake.
(It may not take the entire can. Stop pouring if liquid starts to pool in the bottom of the pan.)
5. Spread the crushed pineapple on top of the cake.
6. Frost the cake with cool whip.
7. Sprinkle shredded coconut over everything.
8. Store in the fridge when finished.





Emily's Stormy Fruit Punch

Jon and Lacey enjoyed a romantic moment thanks to a lot of rain and a little fruit punch.

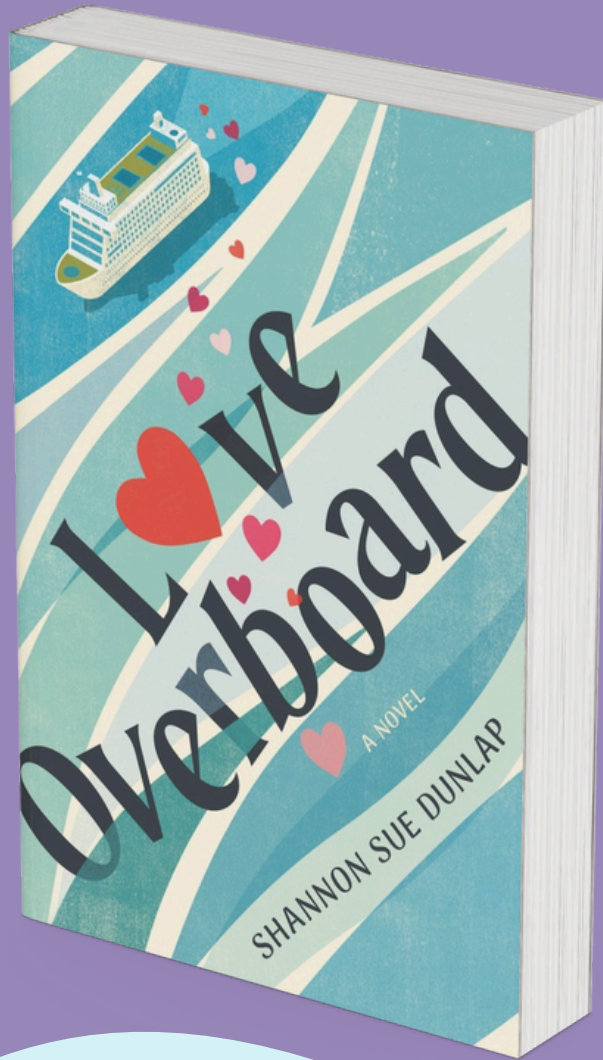
Ingredients

- 1 bottle of ginger ale (2 liter)
- 1 bottle of pomegranate juice
- 1 can of pineapple juice
- 1 orange
- 1 lime

Directions

1. In a large punch bowl, combine the ginger ale, pomegranate juice, and pineapple juice.
2. Slice the orange and lime into thin, round pieces.
3. Add the fruit slices to the punch for decoration.
4. Don't spill it on yourself. There isn't a handsome cruise director around with a spare sweatshirt.

Dear Book Club,
THANK YOU!



“I absolutely adored *Love Overboard*. Whether you enjoy romance, comedy, mystery, or women’s fiction, this is the book you’re looking for. I laughed aloud, teared up, curled my toes in anticipation, then sighed in satisfaction when I reached the last perfect page.”

—Angela Ruth Strong, author of the *Love Off Script* series